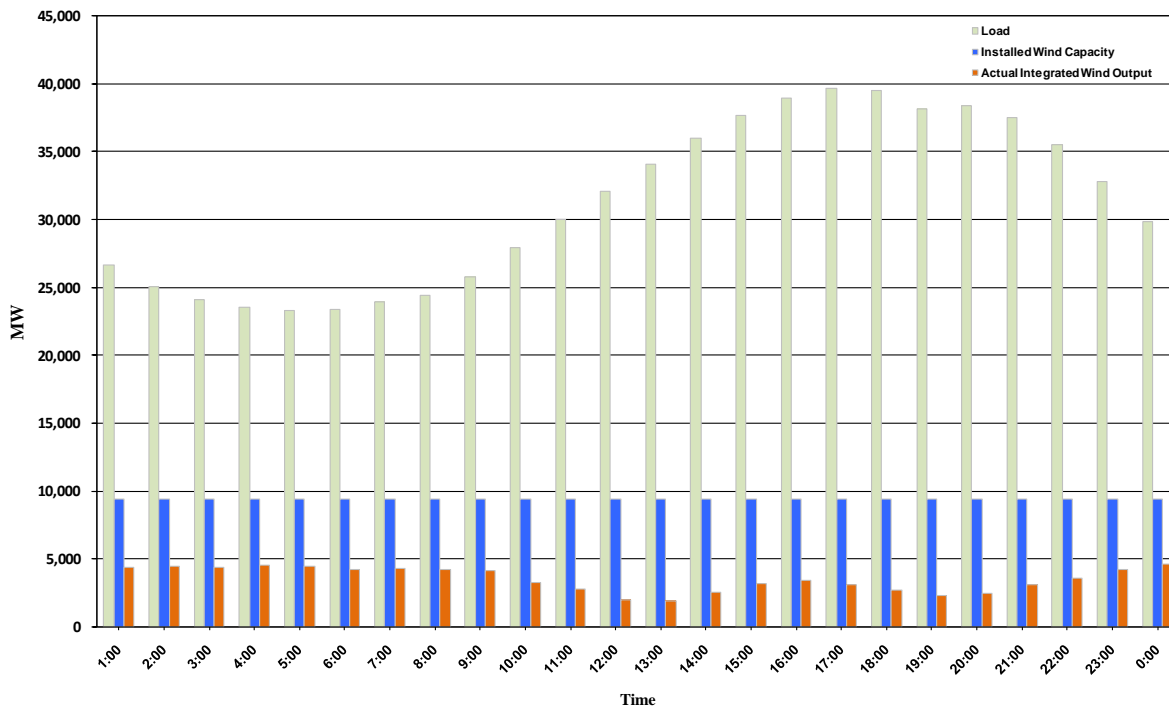




ERCOT Grid Operations Wind Integration Report: 10/10/10

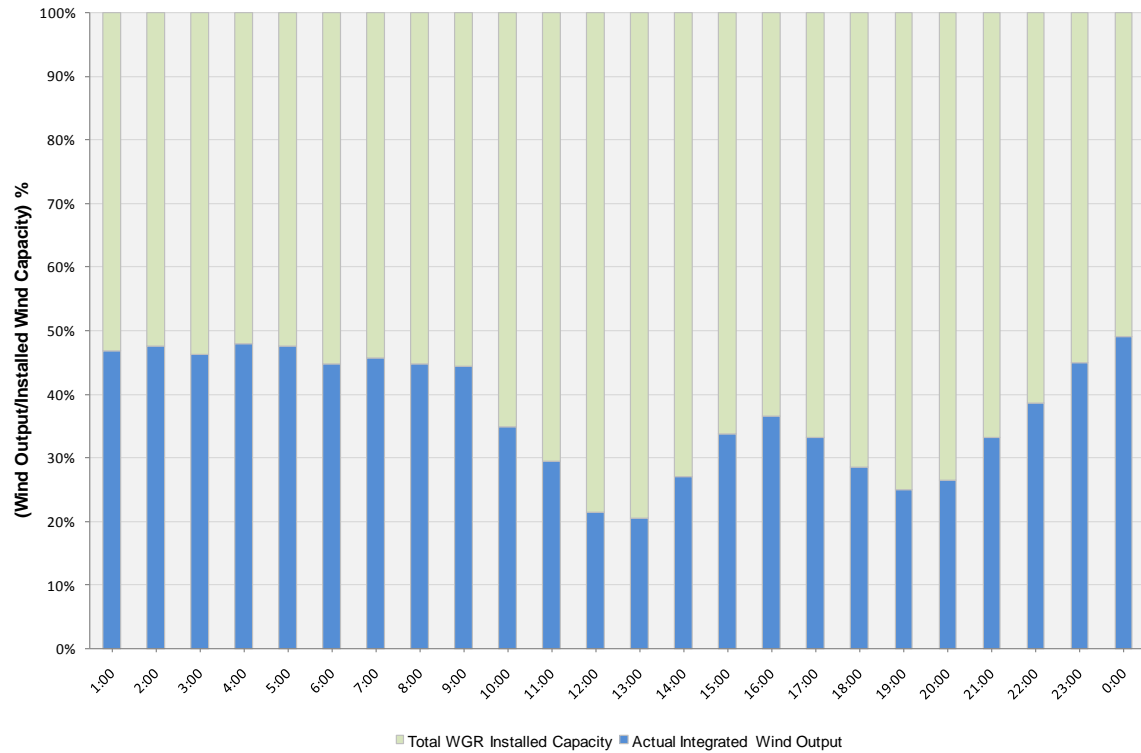
Peak Load	39,641 MW
Load Peak Hour	17
Wind Record 06/12/10	7016 MW
Max Wind value	4791 MW
Wind Peak Hour	23:41:32
Wind Integration %	16.36

Hourly Average Actual Load vs. Actual Wind Output
10-10-2010

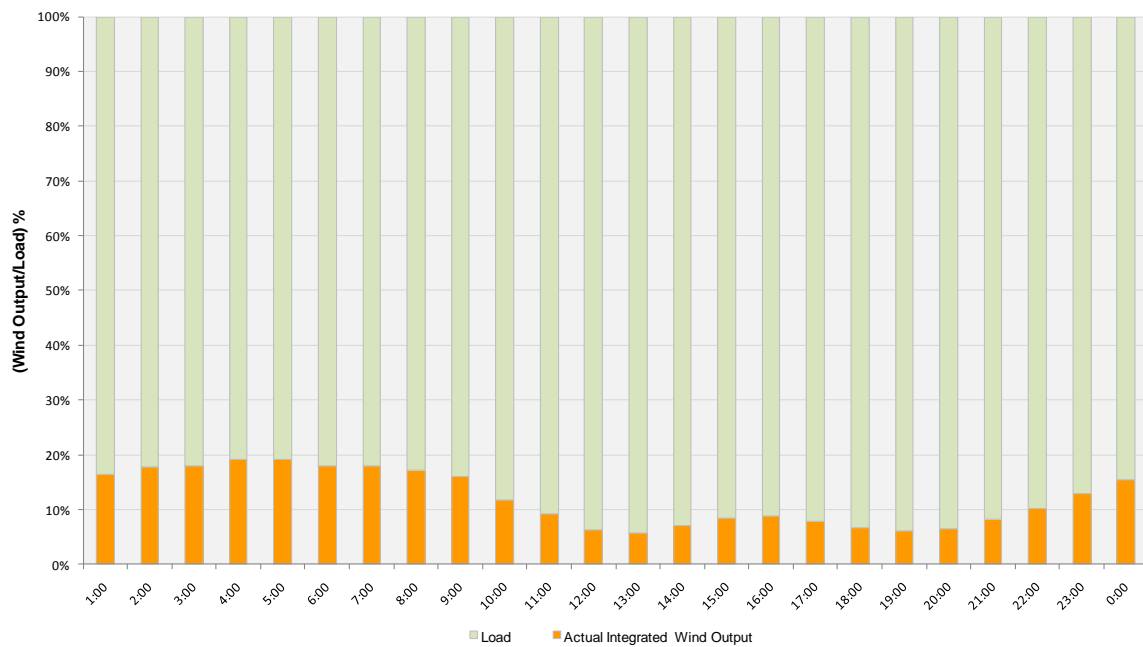




Actual Wind Output as a Percentage of the Total Installed Wind Capacity
10-10-2010



Actual Wind Output as a Percentage of the ERCOT Load
10-10-2010





ERCOT Load vs. Actual Wind Output 10/03/10 - 10/10/10

